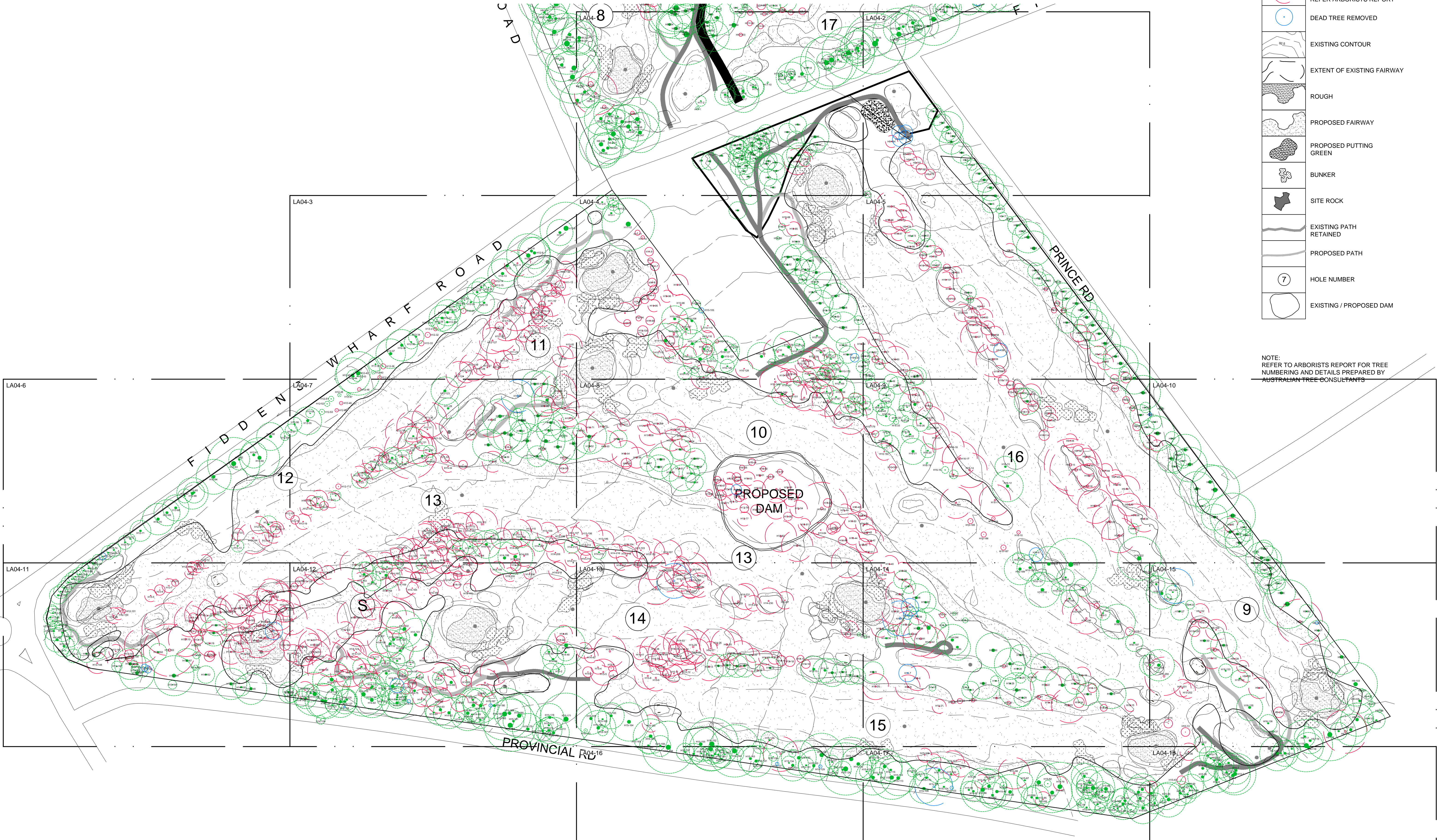


LEGEND

	SITE BOUNDARY
	EXISTING TREE RETAINED REFER ARBORISTS REPORT
	EXISTING TREE REMOVED REFER ARBORISTS REPORT
	DEAD TREE REMOVED
	EXISTING CONTOUR
	EXTENT OF EXISTING FAIRWAY
	ROUGH
	PROPOSED FAIRWAY
	PROPOSED PUTTING GREEN
	BUNKER
	SITE ROCK
	EXISTING PATH RETAINED
	PROPOSED PATH
	HOLE NUMBER
	EXISTING / PROPOSED DAM

NOTE:
REFER TO ARBORISTS REPORT FOR TREE
NUMBERING AND DETAILS PREPARED BY
AUSTRALIAN TREE CONSULTANTS



LA04-8

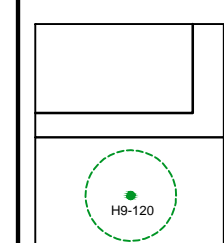
17

taylor
brammer

218 Oxford Street, Woollahra, NSW, Australia, 2025
tel: (02) 9387 8855 fax: (02) 9387 8155
e: sydney@taylorbrammer.com.au

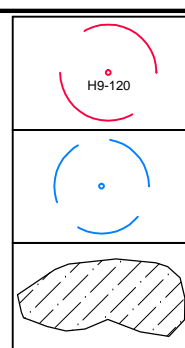
acu dhadi
taylor brammer landscape architects pty ltd sydney 61 02 9387 8855

LEGEND



SITE BOUNDARY

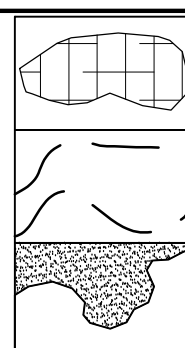
EXISTING TREE RETAINED
REFER ARBORISTS REPORT



EXISTING TREE REMOVED
REFER ARBORISTS REPORT

DEAD TREE REMOVED PRIOR

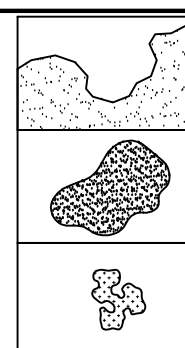
PROPOSED
UNDERSTORY PLANTING



EXISTING PLANTING
TO REMAIN

EXTENT OF
EXISTING FAIRWAY

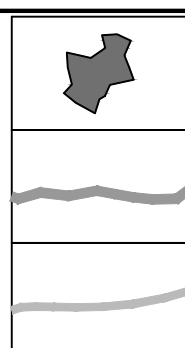
ROUGH



PROPOSED FAIRWAY

PROPOSED PUTTING
GREEN

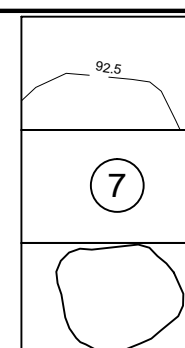
BUNKER



SITE ROCK

EXISTING PATH
RETAINED

PROPOSED PATH

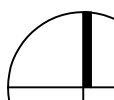


EXISTING CONTOUR

HOLE NUMBER

EXISTING / PROPOSED DAM

Issue	Comments	Date
A	DA SUBMISSION	21.03.2017
B	REVISED DA SUBMISSION	07.12.2017
C	REVISED DA SUBMISSION	30.04.2017



ED DAM

PROJECT

KILLARA GOLF COURSE

JOB NUMBER
10-129S

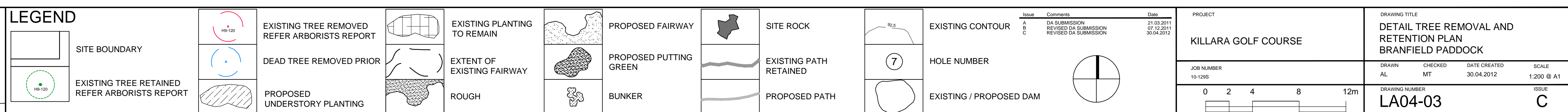
0 2 4 8 12m

DRAWING TITLE			
DETAIL TREE REMOVAL AND RETENTION PLAN BRANFIELD PADDOCK			
DRAWN	CHECKED	DATE CREATED	SCALE
AL	MT	30.04.2012	1:200 @ A1
DRAWING NUMBER			ISSUE
LA04-01			C

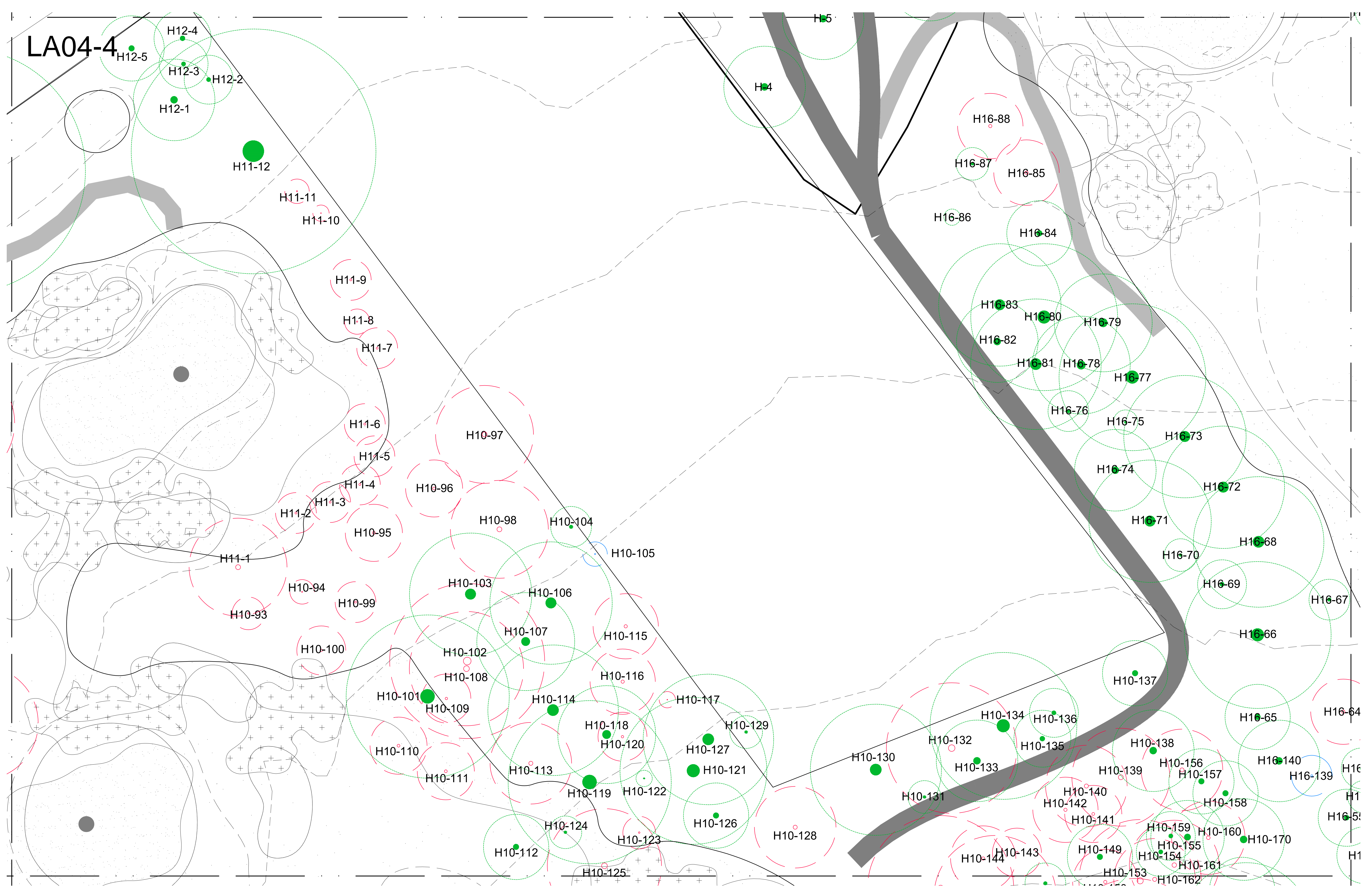
The map displays the LA04-2 area, showing a road and a river. Sampling locations are marked with green and red dots and circles. The locations are labeled as follows:

- H9-1 through H9-14:** Green dots with green circles.
- H9-15 through H9-187:** Red dots with red circles.
- H17-32 through H17-47:** Green dots with green circles.

The map also shows a road and a river. The road is a thick black line. The river is a blue line. The map is labeled with 'LA04-2' in the top left corner.



LA04-4



218 Oxford Street, Woolahra, NSW, Australia, 2025
tel: (02) 9387 8855 fax: (02) 9387 8155
e: sydney@taylorbrammer.com.au

ecu dhadi
austmer
sydney

taylor brammer landscape architects Pty Ltd
ABN 61 028 724 989

LEGEND

SITE BOUNDARY

EXISTING TREE RETAINED
REFER ARBORISTS REPORT

EXISTING TREE REMOVED
REFER ARBORISTS REPORT

DEAD TREE REMOVED PRIOR

PROPOSED UNDERSTORY PLANTING

EXISTING PLANTING TO REMAIN

EXTENT OF EXISTING FAIRWAY

ROUGH

PROPOSED FAIRWAY

PROPOSED PUTTING GREEN

BUNKER

SITE ROCK

EXISTING PATH RETAINED

PROPOSED PATH

7

EXISTING / PROPOSED DAM

Issue	Comments	Date
A	DA SUBMISSION	21.03.2011
B	REVISED DA SUBMISSION	07.12.2011
C	REVISED DA SUBMISSION	30.04.2012

PROJECT

KILLARA GOLF COURSE

JOB NUMBER

10-129S

0 2 4 8 12m

DRAWING TITLE

DETAIL TREE REMOVAL AND RETENTION PLAN
BRANFIELD PADDOCK

DRAWN

AL

CHECKED

MT

DATE CREATED

30.04.2012

SCALE

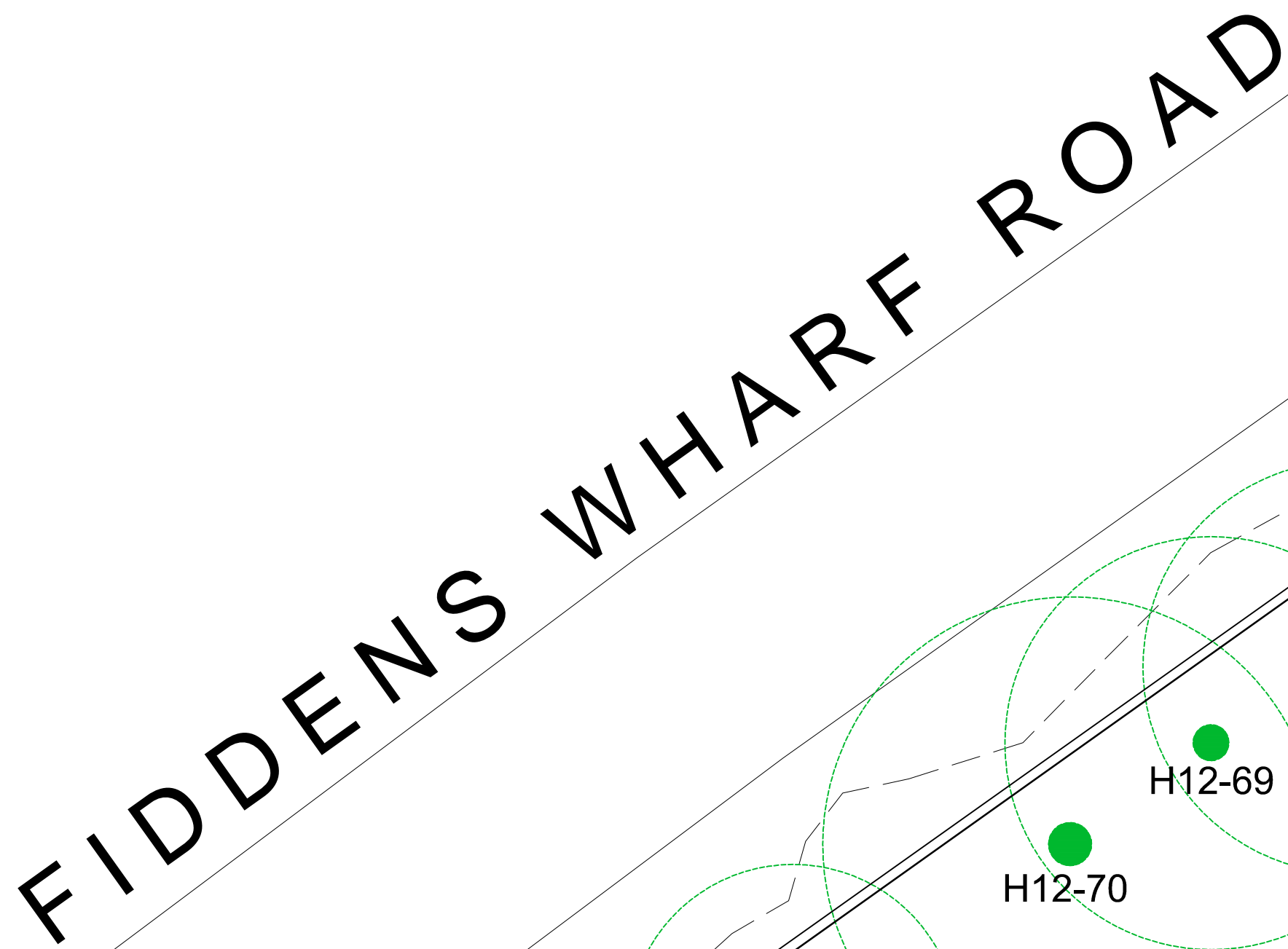
1:200 @ A1

DRAWING NUMBER

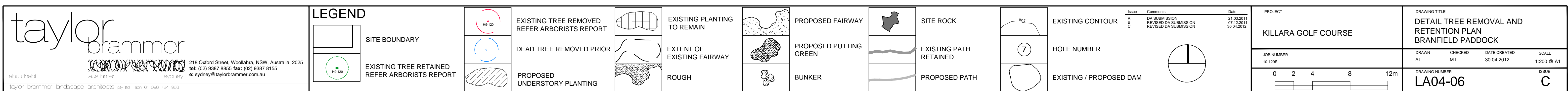
LA04-04

ISSUE

C



12



The map displays a complex geological or topographical area with various features and labels. A large central area is labeled '16'. Numerous points are labeled with codes such as H16-1 through H16-122, H9-1 through H9-60, and H10-1 through H10-188. The map includes a network of roads and a grid system. The labels are color-coded: red for points within red dashed circles, green for points within green dashed circles, and blue for points within blue dashed circles. The map also shows a network of roads and a grid system.